

DATE / CUSTOMER / QUOTE # /

/ CHASSIS INFORMATION /

YEAR / 2024 MAKE / KENWORTH MODEL / T480

SPECS / Tandem Axle Engine: Paccar PX9 350 FAWR: 20,000 lbs. RAWR: 400,00 lbs. GVWR:60,000 lbs.
Front Tire Size: 425/65r22.5 CT: 232" WB: 302" AF: 100"
Transmission: Allison 3000RDS
Brakes: Air



/ TRUCK BODY & EQUIPMENT UPFITTING /

POWER TO LIFT

CRANE SPECS /

HMF 2530L5RCS Crane

5 Telescopic extensions - 15.3m / 50' 2"
Capacity @ max reach: 1220kg / 2685lbs

Scanreco radio controlled operation
Single power link
Oil tank on frame: 100L / 26.4G
Rotation: 450° rack and pinion
Safety: Standard RCL5400
Work area: 12 o'clock
Paint: HMF - EQC treatment. Red RAL3002

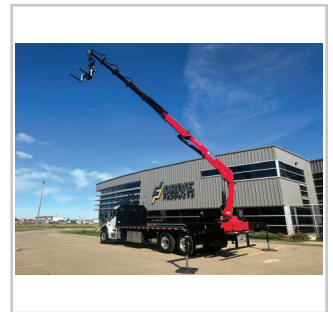
Stabilizer span: 6.5m / 255.8"
Stabilizer extension: Hydraulic - Radio Remote
Stabilizer style: GR type, Swing up w/gas spring.
Fixed footplate

Options
Extra functions: 2 auxiliary functions, Kinshofer
KM461forks
Winch: No
High pressure filter: Yes
Oil cooler: Yes

Weight: 2955kg/6500lbs (includes stabilizers)
Installation space required: 815mm / 32.1"
Working pressure: 345 bar / 5300 PSI
Pump flow required: 70 L/min / 18.5 GPM

BODY & UPFITTING /

Flatdeck with integrated high strength torque box
Length: 25' Width: 102"
Deckplate: Steel checkerplate
Sliding winch track w/ 8 straps
Headboard: 50", 24" footboard
LED DOT body lighting
Steel is painted black
One Grab handle on Headboard
Stepladder mounted driverside
1 Underbody Aluminum Toolboxes each on driveside & passenger
Side



*Images are for demonstrative purposes only.

/ PRICING /

SUBTOTAL /
FREIGHT /
TAXES /
TOTAL /
FOB /

SIGNATURE _____

DATE _____

TERMS /



/ TRUCK BODY & EQUIPMENT UPFITTING /

POWER TO LIFT

/ SPECIFICATIONS - CONT. /

ADDITIONAL NOTES /

Standard Features include:

- HMF low weight design
- Small installation envelope
- Internal hose routing
- Regeneration on extension
- Electronic speed adaptation system, HDL-d/HD5
- Proportional control valve PVG 32
- Slew braking control
- Lift and jib cylinder shielding

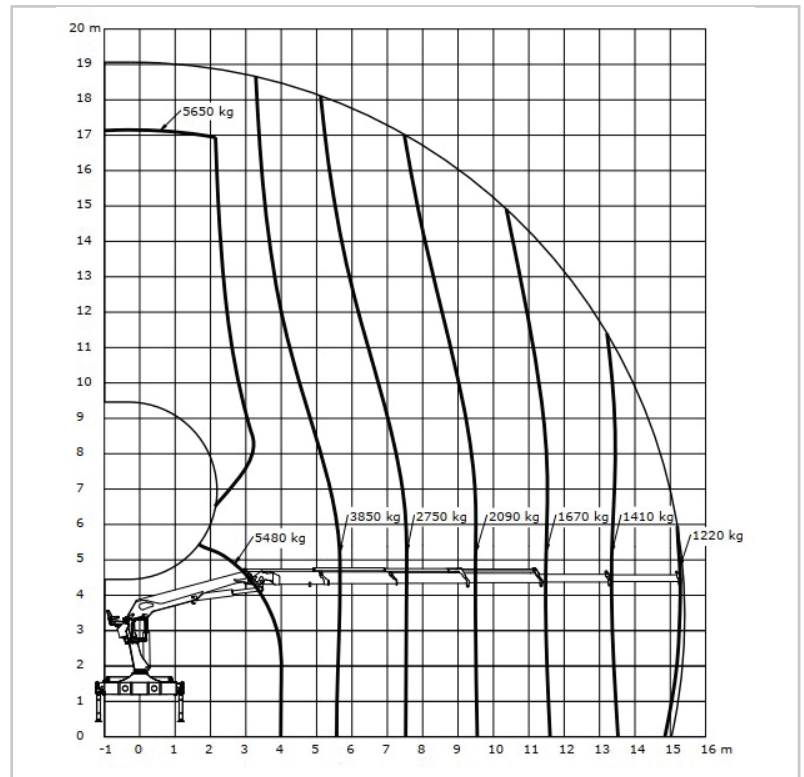
- Poly outrigger pads 24x24x2" (2)
- Outrigger pad holder on each side of truck
- Toolboxes:

HMF Warranty - 1 year total, 3 year structural

Quote valid for 14 days
Subject to prior sale

Lead times were valid at the time of quote only, and due to worldwide shortages may vary without notice.

Lift Diagram * Demonstrative Purposes Only



* Photos are for demonstrative purposes only

