

HMF 810K-MCS

The HMF 810K-MCS is a manually operated crane with low tare weight and high lifting capacity.



Main benefits

- Full speed and manoeuvrability in the entire working area
- Minimum space requirements
- Precise and simple control

A versatile and reliable crane with high lifting capacity

The HMF 810K-MCS is a crane with full speed in the entire working area.

The manually operated control valve and HDL functions on this crane provide precise and simple control of the crane functions.

The crane furthermore has a low tare weight compared with high lifting capacity, which ensures high loading capacity and efficiency during loading and unloading.

Moreover, the crane is equipped with the HMF single Power Plus link arm system which e.g. ensures high working speed when loading and unloading with grab.

| PERFORMANCE | 810-K1 | 810-K2 | 810-K3 | 810-K4 |
|---------------------------------------|--------|--------|--------|--------|
| Load Moment (tm) | 7,6 | 7,5 | 7,3 | 7,1 |
| Hydraulic reach (m) | 5,3 | 7,3 | 9,1 | 11 |
| Weight excl. stabilizers (Kg) | 665 | 740 | 810 | 870 |
| Weight of stabilizers, standard (Kg) | 115 | 115 | 115 | 115 |
| Lift-to-weight ratio | 9,8 | 8,8 | 7,9 | 7,2 |
| Slewing Angle (°) | 400 | 400 | 400 | 400 |
| Slewing torque (kgm) | 840 | 840 | 840 | 840 |
| Working pressure (bar) | 325 | 325 | 325 | 325 |
| GEOMETRY | | | | |
| Height above mounting surface (mm) | 1910 | 1910 | 1910 | 1910 |
| Width, folded, standard (mm) | 2220 | 2220 | 2220 | 2220 |
| Length of crane, no extra valves (mm) | 664 | 664 | 664 | 664 |

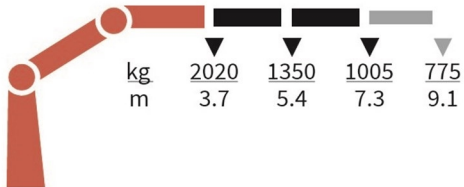
Lifting Capacity



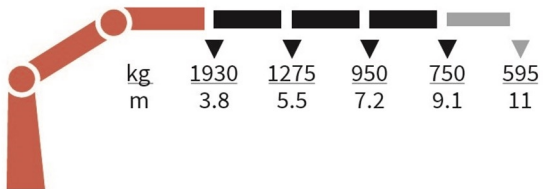
810-K1-MCS



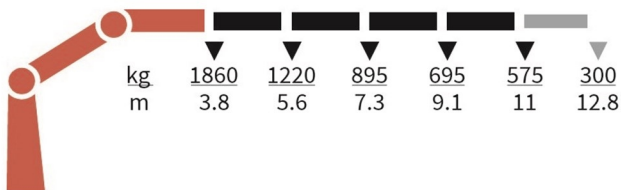
810-K2-MCS



810-K3-MCS



810-K4-MCS



Basics and options

HMF 810K-MCS

Basics

| |
|--|
| Single power plus link arm system |
| Internal hose routing |
| Environmentally friendly quality coating |
| RCL safety system |
| Electro-hydraulic speed adaptation - HDL-h |

Options

| |
|---|
| Control systems |
| Extra digital outputs |
| Electrical options |
| Spotlight |
| Voltage |
| HMF Connect |
| Extra valves |
| Extra valves in hose guides |
| Extra valves in hose reels, internally led |
| Hydraulics |
| Ball valve for tank |
| Oil cooler, small |
| Biodegradable oil |
| High-pressure filter |
| Oil tank 50 l mounted on the crane |
| Temperature monitoring |
| Mechanical options |
| Manual extension |
| Hook for manual extension |
| Crane orientation |
| Mounting bolt kit |
| Fittings for mounting bolt kits |
| Stability and safety |
| Electronic vehicle stability for MCS cranes |
| Cylinder limitation |
| 2-section Cylinder and beam limitation |
| 2CYBEL-I |
| 2-stage load moment limitation |
| Preparation for alternative stability system |
| Alarm flash on stabilizer legs |
| Calibration bypass |
| Quadrant operator protection system |
| Beam and height warning |
| Stabilizer leg warning |
| Stop button |
| Stabilizer beams and legs |
| Manual swing-up stabilizer legs with gas spring |
| Manual swing-up stabilizer legs |
| Fixed vertical stabilizer legs |
| Fixed vertical stabilizer legs, long |
| Footplate with ball joint |
| Footplate extended |
| Manual stabilizer beams 3.4 m - 5.2 m |
| Manual swing-up stabilizer legs, long |
| Hydraulic stabilizer beams 4.4 m - 5.2 m |

Colours

RAL colors