



# HMF

## 2530L-RCS

**The HMF 2530L-RCS is a long boom crane boosting high working speeds.**

### A strong and versatile crane

The HMF 2530L-RCS is a long boom crane developed for demanding professionals that require to radio remote control the crane. The crane has a compact design as well as fast and easy daily maintenance.

HMF's high quality surface treatment EQC (Environmentally friendly Quality Coating) ensures a particularly sturdy and durable surface, which allows the crane to retain a high resale value.

HMF's long boom cranes are equipped with an RCL safety system, which is a safety system independent of the operator's doings. Through monitoring of the current load moment on the crane and working conditions, the RCL safety system protects the crane against overloading and consequential damage.

Additionally, the crane can be delivered with HMF's loaddependent EVS system monitoring and ensuring stability.

### Main Benefits

- Radio remote control system for total freedom
- Single link arm system on the jib for extra strength and stability
- Powerful slewing torque

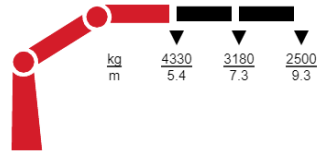
PERFORMANCE	2530-L2	2530-L3	2530-L4	2530-L5
Load moment (tm)	23,6	22,9	22,3	21,8
Hydraulic reach (m)	9,4	11,5	13,4	15,4
Weight excl. stabilizers (kg)	2015	2170	2325	2465
Weight of stabilizers, standard (kg)	300	300	300	300
Lift-to-weight ratio	10,7	9,7	8,8	8,2
Slewing angle (°)	450	450	450	450
Slewing torque (kgm)	2710	2710	2710	2710
Working pressure (bar)	345	345	345	345
GEOMETRY				
Height above mounting surface (mm)	2600	2600	2600	2600
Width, folded, standard (mm)	2500	2500	2500	2500
Length of crane, no extra valves (mm)	815	815	815	815



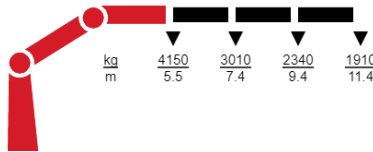
## LIFTING CAPACITY

HMF2530L-RCS

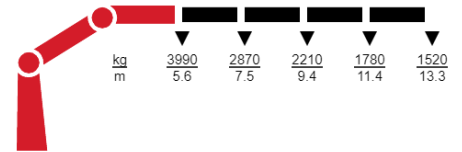
2530-L2-RCS



2530-L3-RCS



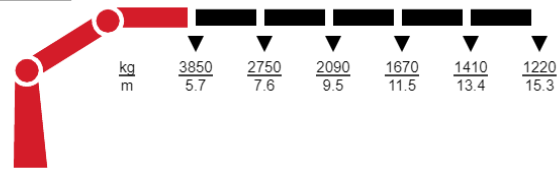
2530-L4-RCS



## BASIC FEATURES

- Electronic speed adaptation system, HDL-d/HD5
- Progressive crane control
- Priority flow control
- Single power plus link arm system
- Proportional control valve PVG 16
- Internal hose routing

2530-L5-RCS



- ▼ Lifting capacity, no manual extensions
- ▽ Lifting capacity with manual extensions

## OPTIONS

### CONTROL STATIONS

Top seat RC

### CONTROL SYSTEMS

Radio remote control box Maxi

Radio remote control box Mini

### ELECTRICAL OPTIONS

Spotlight

Voltage

### EXTRA VALVES

2 extra valves

Extra valves in hose guides

Extra valves in hose reels, internally led

### HYDRAULICS

Oil cooler, medium

2 manually controlled available stabilizer functions

4 manually controlled available stabilizer functions

Biodegradable oil

Radio remote control of stabilizer beams and stabilizer legs on crane

### MECHANICAL OPTIONS

Crane orientation

Shielding of load-holding valve

Shielding of jib cylinder

Mounting bolt kit

Fittings for mounting bolt kits

Ladder for top seat

### STABILITY AND SAFETY

Electronic vehicle stability EVS

Monitoring of stabilizer legs down

Monitoring of boom direction, stabilizer legs and each stabilizer beam

2-stage load moment limitation

Preparation for alternative stability system

Alarm flash on stabilizer legs

Calibration of vehicle stability system during crane operation

Light tower

Temperature monitoring

Beam and height warning

Stabilizer leg warning

### STABILIZER BEAMS AND LEGS

Hydraulic stabilizer beams 5.6 m - 7.4 m

Manual stabilizer beams 5.6 m

Hydraulic swing-up stabilizer legs

Hydraulic stabilizer beams 4.4 m - 5.2 m

Manual swing-up stabilizer legs with gas spring

Manual swing-up stabilizer legs

Fixed vertical stabilizer legs, short

Fixed vertical stabilizer legs

Footplate with ball joint

Footplate extended

### COLOURS

RAL colours

The content of this material is for general information purpose. Cranes in the pictures may be featured with optional equipment, which do not correspond to the standard version. Please note, that weights may vary with a 5% deviation.

## UPFITTING, SERVICE AND DISTRIBUTION PHONE NUMBERS

**/ Toronto (H.O.)** TEL 905.564.5800  
**/ Newmarket** TEL 289.453.1090  
**/ Etobicoke** TEL 416.679.1573  
**/ Tillsonburg** TEL 519.842.7200  
**/ Windsor** TEL 519.727.4398  
**/ Ottawa** TEL 613.691.4196  
**/ Montréal** TEL 514.856.0407  
**/ Laval** TEL 450.661.6209

**/ Halifax** TEL 902.468.8288  
**/ Moncton** TEL 560.388.3465  
**/ Winnipeg** TEL 204.201.1036  
**/ Morden** TEL 204.201.1197  
**/ Regina** TEL 306.359.3677  
**/ Edmonton** TEL 780.960.6826  
**/ Calgary** TEL 403.720.8033  
**/ Vancouver** TEL 604.888.4464



**POWER BEYOND**  
driveproducts.com