



HMF

2320K-RCS

The HMF 2320K-RCS is a sturdy, fast and flexible crane with a lift-to-weight ratio amongst the best on the market.

Crane with extra precision

The HMF 2320K has a wide variety of options, so it will fit your exact needs. The low tare weight and reduced space requirements of the crane enable higher loading capacity on the truck body and savings on fuel.

The design of the crane with internal hose routing leaves fewer parts exposed for external damage, which also contributes to reducing the cost of ownership.

The service-friendly construction is furthermore designed to make maintenance very easy and increase the lifespan of your crane.

Main Benefits

- Excellent lift-to-weight ratio
- Very large stabilizer spread
- Automatic load-dependent stability system

PERFORMANCE	2320-K2	2320-K3	2320-K4	2320-K5	2320-K6	2320-K7	2320-K8
Load moment (tm)	20,8	20,3	19,9	19,4	19	18,6	18,3
Hydraulic reach (m)	8,3	10,3	12,5	14,8	17,1	19,3	21,6
Weight excl. stabilizers (kg)	1870	2025	2210	2350	2475	2580	2665
Weight of stabilizers, standard (kg)	290	290	290	290	290	290	290
Lift-to-weight ratio	9,6	8,8	8,0	7,3	6,9	6,5	6,2
Slewing angle (°)	400	400	400	400	400	400	400
Slewing torque (kgm)	2763	2763	2763	2763	2763	2763	2763
Working pressure (bar)	365	365	365	365	365	365	365
GEOMETRY							
Height above mounting surface (mm)	2295	2295	2295	2295	2295	2295	2335
Width, folded (mm)	2500	2500	2500	2500	2500	2500	2500
Length of crane, no extra valves (mm)	885	885	885	885	885	995	995



BASIC FEATURES

HMF2320K-RCS

Electronic speed adaptation system, HDL-d/HD5
Slew braking control
Progressive crane control
Priority flow control

Dual Power Plus link arm system
Proportional control valve PVG 32
Internal hose routing

OPTIONS

CONTROL STATIONS	MECHANICAL OPTIONS (CONT.)
High stand flexible	Hook for manual extension
High stand RC	Crane orientation
Top seat RC	Shielding of load-holding valve
Heated Seat	Shielding of jib cylinder
CONTROL SYSTEMS	Mounting bolt kit
Radio remote control box Maxi	Fittings for mounting bolt kits
Radio remote control box Mini	STABILITY AND SAFETY
ELECTRICAL OPTIONS	Electronic vehicle stability EVS
Spotlight	AutoSwitch
Voltage	Monitoring of stabilizer legs down
EXTRA VALVES	Monitoring of stabilizer legs and beam
Extra valves in hose guides	Monitoring of boom direction, stabilizer legs and each stabilizer beam
Extra valves in hose guides, raised	Cabin anti-crash
Extra valves in hose reels, internally led	2-Stage load moment limitation
Multi-coupling	Preparation for alternative stability system
FLY-JIB	Stabilizer duty control
Fly-jib 700	Alarm flash on stabilizer legs
Personnel basket on fly-jib	Calibration of vehicle stability system during crane operation
HYDRAULIC HOIST	Light tower
Hydraulic hoist 2500	Temperature monitoring
2-part snatch block	High stand safety system - quadrant
HYDRAULICS	Quadrant operator protection system
Ball valve for tank	Beam and height warning
Oil cooler, medium	Beam and park warning
Oil cooler, large	Stabilizer leg warning
2 manually controlled available stabilizer functions	STABILIZER BEAMS AND LEGS
4 manually controlled available stabilizer functions	Hydraulic stabilizer beams 5.6 m - 7.4 m
1-4 available radio remote-controlled functions	Manual stabilizer beams 5.6 m
Hydraulic functions for separate traverse	Hydraulic swing-up stabilizer legs
3rd extra valve	Manual swing-up stabilizer legs with gas spring
Hose kit for 1 extra valve led to the jib	Manual swing-up stabilizer legs
Biodegradable oil	Fixed vertical stabilizer legs
Oil tank 90 l mounted on the crane	Fixed vertical stabilizer legs, long
Radio remote control of stabilizer beams and stabilizer legs on crane	Footplate with ball joint
MECHANICAL OPTIONS	Footplate extended
Personnel basket on crane	COLOURS
Manual extension	RAL colours

The content of this material is for general information purpose. Cranes in the pictures may be featured with optional equipment, which do not correspond to the standard version. Please note, that weights may vary with a 5% deviation.

UPFITTING, SERVICE AND DISTRIBUTION PHONE NUMBERS

/ Toronto (H.O.) TEL 905.564.5800	/ Halifax TEL 902.468.8288
/ Newmarket TEL 289.453.1090	/ Moncton TEL 560.388.3465
/ Etobicoke TEL 416.679.1573	/ Winnipeg TEL 204.201.1036
/ Tillsonburg TEL 519.842.7200	/ Morden TEL 204.201.1197
/ Windsor TEL 519.727.4398	/ Regina TEL 306.359.3677
/ Ottawa TEL 613.691.4196	/ Edmonton TEL 780.960.6826
/ Montréal TEL 514.856.0407	/ Calgary TEL 403.720.8033
/ Laval TEL 450.661.6209	/ Vancouver TEL 604.888.4464

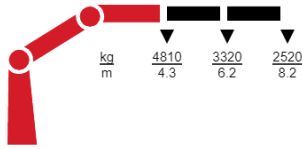


POWER BEYOND
driveproducts.com

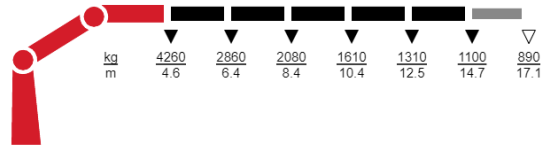
LIFTING CAPACITY

HMF2320K-RCS

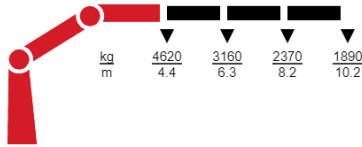
2320-K2-RCS



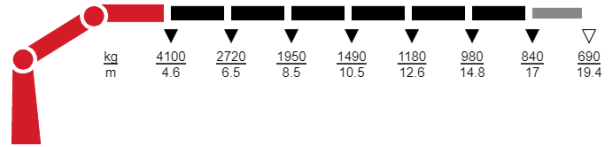
2320-K5-RCS



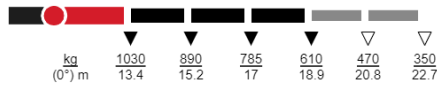
2320-K3-RCS



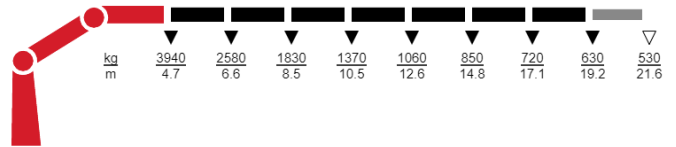
2320-K6-RCS



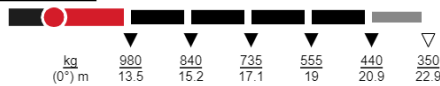
2320-K3-RCS FJ700-K3



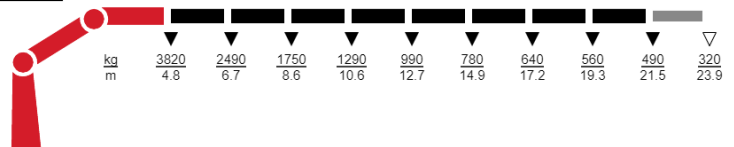
2320-K7-RCS



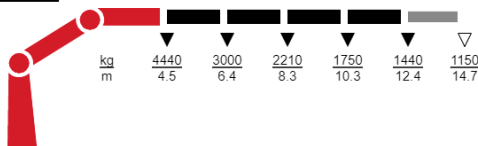
2320-K3-RCS FJ700-K4



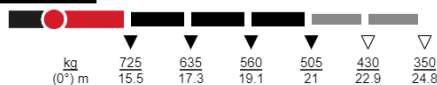
2320-K8-RCS



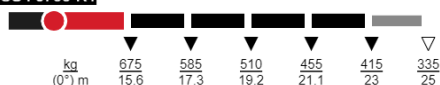
2320-K4-RCS



2320-K4-RCS FJ700-K3



2320-K4-RCS FJ700-K4



▼ Lifting capacity, no manual extensions
 ▽ Lifting capacity with manual extensions

The content of this material is for general information purpose. Cranes in the pictures may be featured with optional equipment, which do not correspond to the standard version. Please note, that weights may vary with a 5% deviation.

UPFITTING, SERVICE AND DISTRIBUTION PHONE NUMBERS

- / Toronto (H.O.) TEL 905.564.5800
- / Newmarket TEL 289.453.1090
- / Etobicoke TEL 416.679.1573
- / Tillsonburg TEL 519.842.7200
- / Windsor TEL 519.727.4398
- / Ottawa TEL 613.691.4196
- / Montréal TEL 514.856.0407
- / Laval TEL 450.661.6209
- / Halifax TEL 902.468.8288
- / Moncton TEL 560.388.3465
- / Winnipeg TEL 204.201.1036
- / Morden TEL 204.201.1197
- / Regina TEL 306.359.3677
- / Edmonton TEL 780.960.6826
- / Calgary TEL 403.720.8033
- / Vancouver TEL 604.888.4464



POWER BEYOND
 driveproducts.com