

DATE /

CUSTOMER /

QUOTE # / TORQTE258473

/ CHASSIS INFORMATION /

YEAR / 2022

MAKE / Freightliner

MODEL / M2-106

SPECS / VIN # 3ALHCYD20NDNL4803 - DD8 7.7L 6 CYL DUAL STAGE 350 HP @ 2200 RPM / ALLISON 3000 RDS AUTOMATIC TRANSMISSION WITH PTO PROVISION / AIR BRAKE PACKAGE
300" WB, 116" rear frame overhang / Expected GVWR 58,740lb



/ TRUCK BODY & EQUIPMENT UPFITTING /

POWER TO LIFT

CRANE SPECS /

The HMF 2530L-RCS is a long boom crane developed for demanding professionals that require to radio remote control the crane. The crane has a compact design as well as fast and easy daily maintenance.

HMF 's high quality surface treatment EQC (Environmentally friendly Quality Coating) ensures a particularly sturdy and durable surface, which allows the crane to retain a high re-sale value.

HMF's long boom cranes are equipped with an RCL safety system, which is a safety system independent of the operator's doings. Through monitoring of the current load moment on the crane and working conditions, the RCL safety system protects the crane against overloading and consequential damage.

Additionally, the crane can be delivered with HMF's load-dependent EVS system monitoring and ensuring stability.

Radio Remote, Wallboard Hydraulic Forks, Rear Mount

BODY & UPFITTING /

25' Steel Deck with wood floor

102" Wide x 25' long

5"x3"x1/4" Angle side rails

Exterior side pockets with 3/8" x 3" rub rails

3" structural steel channel cross members on 12" centres

Full length torque box 3/8" top and bottom plates

Additional shear-plating for support

Solid 24" High Rear Headboard (removable)

Sliding track on the passenger side and 8 winches with 3" x30' straps



*Images are for demonstrative purposes only.

/ PRICING /

SUBTOTAL /

FREIGHT /

TAXES /

TOTAL /

FOB / DPI Ottawa

SIGNATURE _____

DATE _____

TERMS /

Quotes are good for 30 days, based current economical costing, subject to change during time of order.



/ TRUCK BODY & EQUIPMENT UPFITTING /

POWER TO LIFT

/ SPECIFICATIONS - CONT. /

ADDITIONAL NOTES /

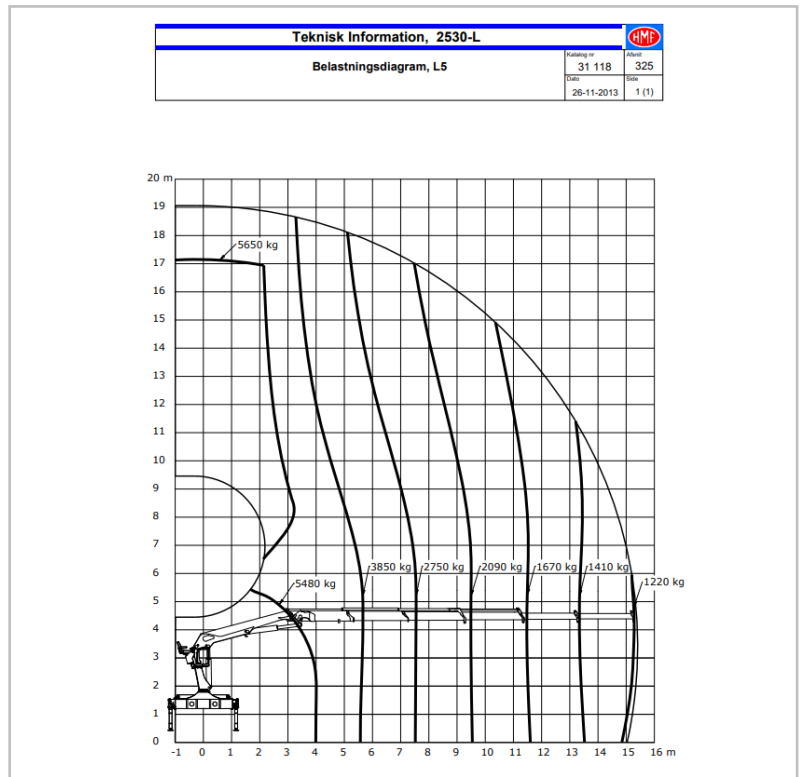
Installation Package Includes:

- Wallboard Crane and Deck
- Wallboard Hydraulic Forks
- Front Outrigger 30-50 t-m
- Outrigger Pads x4
- Outrigger Holders
- Torsion Box
- Boom Rest, Rear removable Rack
- PTO and Pump TBD
- Hoses and Fittings, Hydraulic Oil, Winch Bar
- LED Work Lights x2, LED Mini Lightbar x2
- Aluminum Step w/ Handle x2
- 48"W Aluminum Toolbox x2
- Cone Holders x2
- Fabricated Tandem Pintle Plate w/ 2 D-rings

All Cranes Installed by Drive Products are tested and certified by a third party engineering firm.

This quote is contingent on chassis information provided and engineering approval on weight distribution.

Load Chart



Weight Distribution Diagram

