

HMF

1620K-RCS



The HMF 1620K-RCS is a versatile crane with two link arms and up to 6 extensions.

A strong crane with high lift-to-weight ratio

The HMF 1620K-RCS comes with a wide range of options as well as with a number of economic advantages for you as a crane owner. The low tare weight and reduced space requirements of the crane provide for a greater loading capacity and thus for lower fuel consumption and savings.

Moreover, the internal hose routing protects the crane against wear and tear, which provides for a longer lifespan as well as less downtime and maintenance of your crane.

Main Benefits

- Excellent lift-to-weight ratio
- Intuitive operation thanks to assistance systems
- Automatic load-dependant stability system

PERFORMANCE	1620-K1	1620-K2	1620-K3	1620-K4	1620-K5	1620-K6
Load moment (tm)	15,2	14,7	14,3	13,9	13,5	13,2
Hydraulic reach (m)	6,3	8,4	10,5	12,8	15	17,3
Weight excl. stabilizers (kg)	1360	1500	1640	1775	1895	1990
Weight of stabilizers, standard (kg)	200	200	200	200	200	200
Lift-to-weight ratio	9,7	8,6	7,8	7	6,4	6
Slewing angle (°)	400	400	400	400	400	400
Slewing torque (kgm)	1795	1795	1795	1795	1795	1795
Working pressure (bar)	365	365	365	365	365	365
GEOMETRY						
Height above mounting surface (mm)	2250	2250	2250	2250	2250	2250
Width, folded, standard (mm)	2500	2500	2500	2500	2500	2500
Length of crane, no extra valves (mm)	830	830	830	830	830	830

BASIC FEATURES

HMFI620K-RCS

Electronic speed adaptation system, HDL-d/HD5
Slew braking control
Progressive crane control
Priority flow control

Dual Power Plus link arm system
Proportional control valve PVG 32
Internal hose routing

OPTIONS

CONTROL STATIONS	MECHANICAL OPTIONS (CONT.)
High stand flexible	Shielding of load-holding valve
High stand RC	Shielding of jib cylinder
Top seat RC	Mounting bolt kit
Heated Seat	Fittings for mounting bolt kits
CONTROL SYSTEMS	STABILITY AND SAFETY
Radio remote control box Maxi	Electronic vehicle stability EVS
Radio remote control box Mini	AutoSwitch
ELECTRICAL OPTIONS	Monitoring of stabilizer legs down
Spotlight	Monitoring of stabilizer legs and beam
Voltage	Monitoring of boom direction, stabilizer legs and each stabilizer beam
EXTRA VALVES	Cabin anti-crash
Extra valves in hose guides	2-stage load moment limitation
Extra valves in hose guides, raised	Preparation for alternative stability system
Extra valves in hose reels, internally led	Stabilizer duty control
Multi-coupling	Alarm flash on stabilizer legs
HYDRAULIC HOIST	Calibration of vehicle stability system during crane operation
Hydraulic hoist 1500	Light tower
Hydraulic hoist 2500	Temperature monitoring
2-part snatch block	High stand safety system - quadrant
HYDRAULICS	Quadrant operator protection system
Ball valve for tank	Beam and height warning
Oil cooler, medium	Beam and park warning
Oil cooler, large	Stabilizer leg warning
2 manually controlled available stabilizer functions	STABILIZER BEAMS AND LEGS
4 manually controlled available stabilizer functions	Hydraulic stabilizer beams 4.6 m - 6.5 m
1-4 available radio remote-controlled functions	Manual stabilizer beams 4.6 m - 5.6 m
Hydraulic functions for separate traverse	Hydraulic swing-up stabilizer legs
3rd extra valve	Manual swing-up stabilizer legs with gas spring
Hose kit for 1 extra valve led to the jib	Manual swing-up stabilizer legs
Biodegradable oil	Fixed vertical stabilizer legs
Oil tank 90 l mounted on the crane	Fixed vertical stabilizer legs, long
Radio remote control of stabilizer beams and stabilizer legs on crane	Footplate with ball joint
MECHANICAL OPTIONS	Footplate extended
Personnel basket on crane	COLOURS
Manual extension	RAL colours
Hook for manual extension	
Crane orientation	

The content of this material is for general information purpose. Cranes in the pictures may be featured with optional equipment, which do not correspond to the standard version. Please note, that weights may vary with a 5% deviation.

UPFITTING, SERVICE AND DISTRIBUTION PHONE NUMBERS

/ **Toronto (H.O.)** TEL 905.564.5800
/ **Newmarket** TEL 289.453.1090
/ **Etobicoke** TEL 416.679.1573
/ **Tillsonburg** TEL 519.842.7200
/ **Windsor** TEL 519.727.4398
/ **Ottawa** TEL 613.691.4196
/ **Montréal** TEL 514.856.0407
/ **Laval** TEL 450.661.6209

/ **Halifax** TEL 902.468.8288
/ **Moncton** TEL 560.388.3465
/ **Winnipeg** TEL 204.201.1036
/ **Morden** TEL 204.201.1197
/ **Regina** TEL 306.359.3677
/ **Edmonton** TEL 780.960.6826
/ **Calgary** TEL 403.720.8033
/ **Vancouver** TEL 604.888.4464



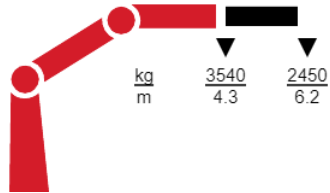
POWER BEYOND
driveproducts.com

ISO Certified by an Accredited Registrar • National Safety Mark Approval • ©Drive Products 2021
Drive Products reserves the right to make changes in specifications, packages, or to discontinue options without notice at any time.

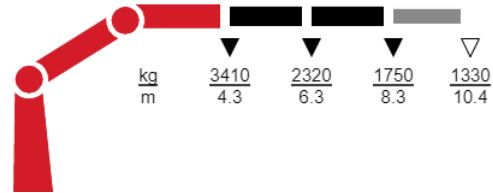
LIFTING CAPACITY

HMF1620K-RCS

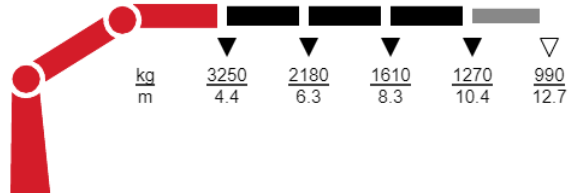
1620-K1-RCS



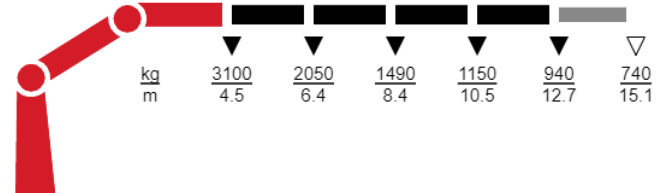
1620-K2-RCS



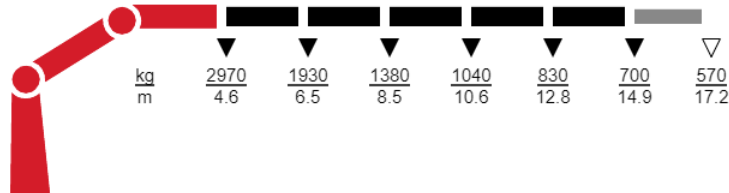
1620-K3-RCS



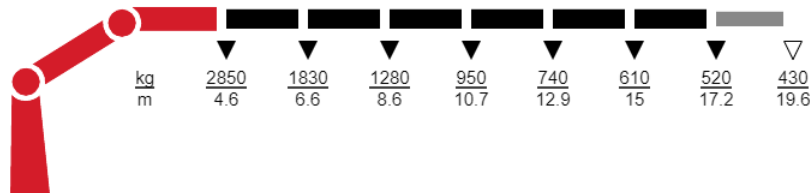
1620-K4-RCS



1620-K5-RCS



1620-K6-RCS



▼ Lifting capacity, no manual extensions
▽ Lifting capacity with manual extensions

The content of this material is for general information purpose. Cranes in the pictures may be featured with optional equipment, which do not correspond to the standard version. Please note, that weights may vary with a 5% deviation.

UPFITTING, SERVICE AND DISTRIBUTION PHONE NUMBERS

/ **Toronto (H.O.)** TEL 905.564.5800
/ **Newmarket** TEL 289.453.1090
/ **Etobicoke** TEL 416.679.1573
/ **Tillsonburg** TEL 519.842.7200
/ **Windsor** TEL 519.727.4398
/ **Ottawa** TEL 613.691.4196
/ **Montréal** TEL 514.856.0407
/ **Laval** TEL 450.661.6209

/ **Halifax** TEL 902.468.8288
/ **Moncton** TEL 560.388.3465
/ **Winnipeg** TEL 204.201.1036
/ **Morden** TEL 204.201.1197
/ **Regina** TEL 306.359.3677
/ **Edmonton** TEL 780.960.6826
/ **Calgary** TEL 403.720.8033
/ **Vancouver** TEL 604.888.4464



POWER BEYOND
driveproducts.com

ISO Certified by an Accredited Registrar • National Safety Mark Approval • ©Drive Products 2021
Drive Products reserves the right to make changes in specifications, packages, or to discontinue options without notice at any time.