

# DTAX2 SERIES

Models: DTAX2-44, DTAX2-42, DTAX2-39

# DUR-A-LIFT®



DTAX2-42 PICTURED

## SPECIFICATIONS

	DTAX2-44	DTAX2-42	DTAX2-39
WORKING HEIGHT	<b>49'</b>	<b>47'</b>	<b>44'</b>
SIDE REACH	<b>30'</b>	<b>28'</b>	<b>28'</b>
APPROX. STOWED TRAVEL HEIGHT	<b>10'</b>	<b>10'</b>	<b>10'</b>
HEIGHT TO BOTTOM OF PLATFORM	<b>44'</b>	<b>42'</b>	<b>39'</b>
BASKET CAPACITY	<b>350#</b>	<b>400#</b>	<b>400#</b>
APPROX. LIFT WEIGHT	<b>2585#</b>	<b>2450#</b>	<b>2235#</b>
ARTICULATING ARM TRAVEL	<b>-5 to 81</b>	<b>-5 to 81</b>	<b>-5 to 81</b>
MAIN BOOM TRAVEL	<b>-25 to 75</b>	<b>-25 to 75</b>	<b>-25 to 75</b>
EXTENSION TRAVEL	<b>122.5"</b>	<b>110.5"</b>	<b>110.5"</b>

Dur-A-Lift Inc. reserves the right to improve models and change specifications without notice or obligation. Dur-A-Lift equipment meets or exceeds all applicable ANSI Standards as of the date of manufacture.

- TELESCOPIC ARTICULATING, PERSONNEL
- WORKING HEIGHT UP TO 49'
- SIDE REACH TO 30'
- UP TO 400 POUND BASKET CAPACITY
- 180 DEGREE BASKET ROTATOR
- COMPACT DESIGN AND STOWING
- OPTIONS AVAILABLE FOR USE WITH 9' BODY
- INSULATED (DTAX2) OR NON-INSULATED (DTAX2S)

**MANY WAYS TO CUSTOMIZE!**

**DUR-A-LIFT®**  
**WE SPEAK BUCKET TRUCK**

# DTAX2 SERIES

Models: DTAX2-44, DTAX2-42, DTAX2-39

**DUR-A-LIFT**  
WE SPEAK BUCKET TRUCK

**Reach up to 47 feet without the use of outriggers**

With the DTAX2-42



## STANDARD

**CONTROLS:** Proportional controls; lower controls with override located at the turntable; engine start/stop from the basket; individual control levers.

**HYDRAULIC SYSTEM:** Rated pressure is 2200 PSI; operating pressure is 2000 PSI; open center hydraulic system; 180° rotating basket.

**MECHANICAL SYSTEM:** Telescoping and articulating boom action; offset main boom reduces travel height; shear ball rotation driven; fully enclosed worm gear box; non-continuous rotation; insulated extension boom 46kv (DTAX2); 24"x24"x42" basket; 110v outlet at upper controls (DTAX2S).

## OPTIONAL

Single hand joystick upper control; outrigger or torsion bars; 12v D.C. backup; fixed basket position (side or end); basket offered in various sizes and configurations; basket liner 50kv (DTAX2); main boom fiberglass insert (DTAX2); chassis isolator art boom fiberglass insert (DTAX2); continuous rotation; tool trays of various sizes; basket and control cover; upper and lower hydraulic tool circuits; tail shelf with walkup.



## INSULATED/NON-INSULATED

Available in insulated or non-insulated formats. (Full pressure controls)

**DTAX2:** insulated (Category C or D)  
**DTAX2S:** non-insulated



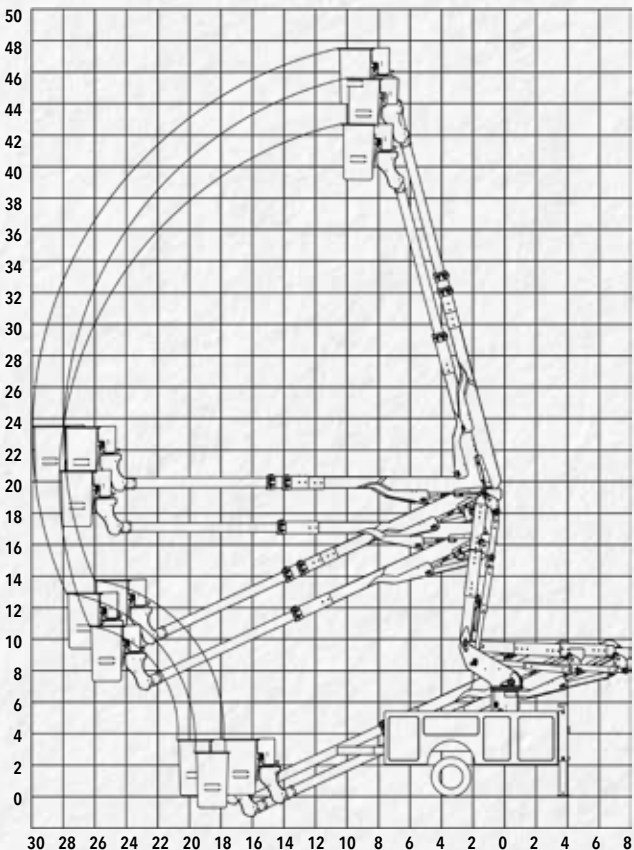
**Fiberglass or aluminum 24"x24"x42" basket**

Ask about larger basket options,



**Negative boom angle allows for ground level access from the basket.**

## REACH DIAGRAM



CHASSIS REQUIREMENT, MIN.: 15,000 GVWR (DTAX2-39/42); 19,000 GVWR (DTAX2-44)  
CHASSIS CAB TO AXLE REQUIREMENT, MIN.: 60"-84" (DTAX2-39/42); 84" (DTAX2-44)

## BUILT FOR YOU

Ask about available chassis, body, tailshelf, and basket options.



## GO GREEN

CLEAN. QUIET. POWERFUL.

Available with hybrid aerial operation.



DUR-A-LIFT, INC., 2002 KINGBIRD AVENUE, PO BOX 31, GEORGE, IOWA 51237  
WWW.DUR-A-LIFT.COM | 1-877-4DURALIFT | SALES@DUR-A-LIFT.COM

WWW.DUR-A-LIFT.COM