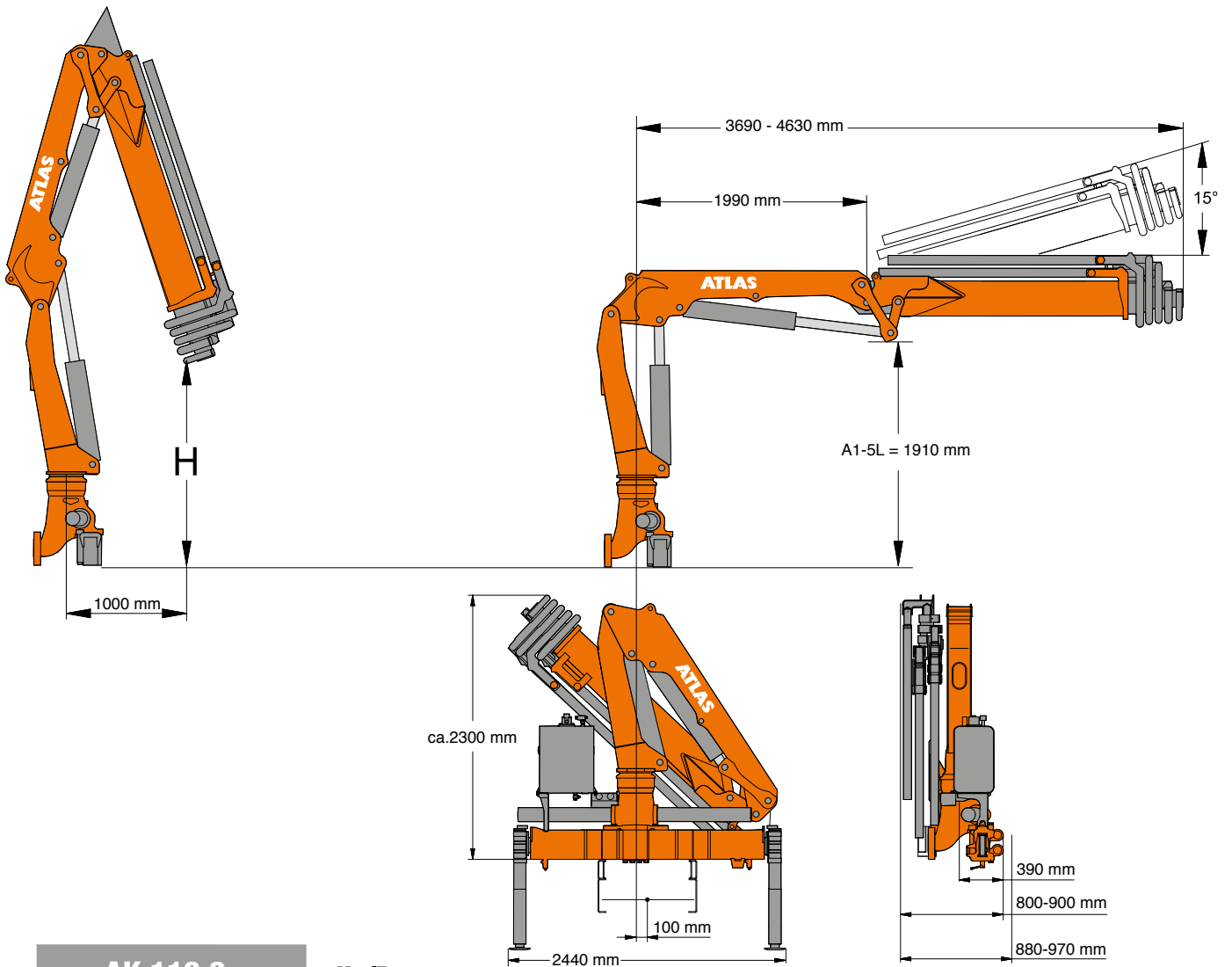



ABMESSUNGEN / Dimensions



AK 116.3

H1/B3

| | Gewicht ohne Abstü- zungsverbreiterungen und Stützbeine Weight without stabilizer extensions and stabilizer legs | H | Betriebsdruck Operating pressure | Ölfördermenge Oil supply amount | Schwenkbereich Swivel range | Schwenkmoment Swivel moment | Hubmoment Lifting moment |
|------|---|----------|-------------------------------------|------------------------------------|--------------------------------|--------------------------------|-----------------------------|
| Typ | Kg | m | bar | l/min | | kNm | kNm |
| A1 | 1315 | 3,84 | | | | | 114,3 |
| A2 | 1430 | 3,56 | | | | | 111,6 |
| A3 | 1520 | 3,35 | | | | | 108,7 |
| A1SL | 1265 | 4,08 | | | | | 115,3 |
| A2SL | 1360 | 4,10 | | | | | 111,8 |
| A3SL | 1450 | 4,11 | 290 | 45 | 410° | 18,1 | 110,4 |
| A1L | 1460 | 2,65 | | | | | 112,0 |
| A2L | 1580 | 2,54 | | | | | 108,6 |
| A3L | 1700 | 2,44 | | | | | 103,8 |
| A4L | 1800 | 2,34 | | | | | 98,2 |
| A5L | 1885 | 2,19 | | | | | 97,0 |

 einfaches Grundgerät im Lasthakenbereich /
simple basic unit for loadhook work